

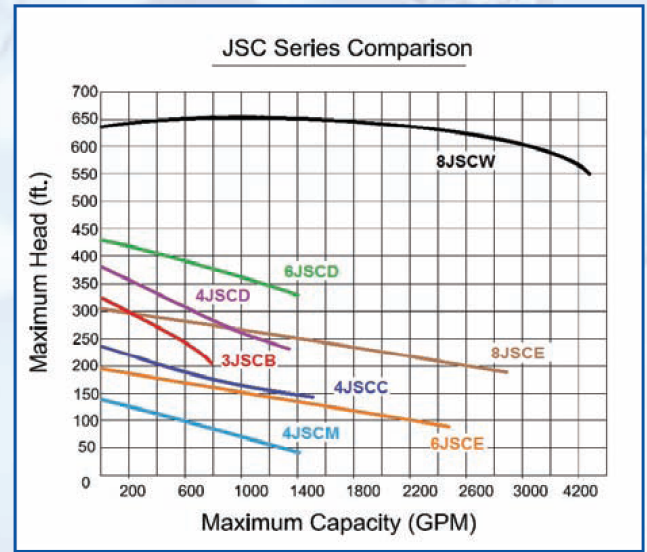
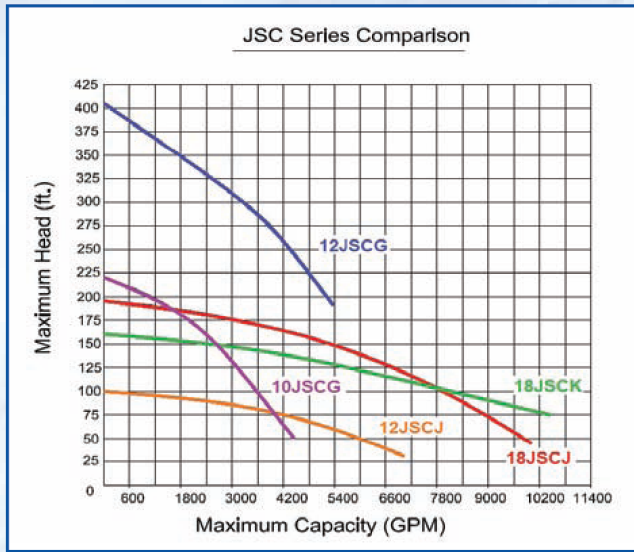



THOMPSON
PUMP
EXPERIENCE INNOVATION

MINING

Solids Handling Dry Prime Compressor-Assisted (JSC)

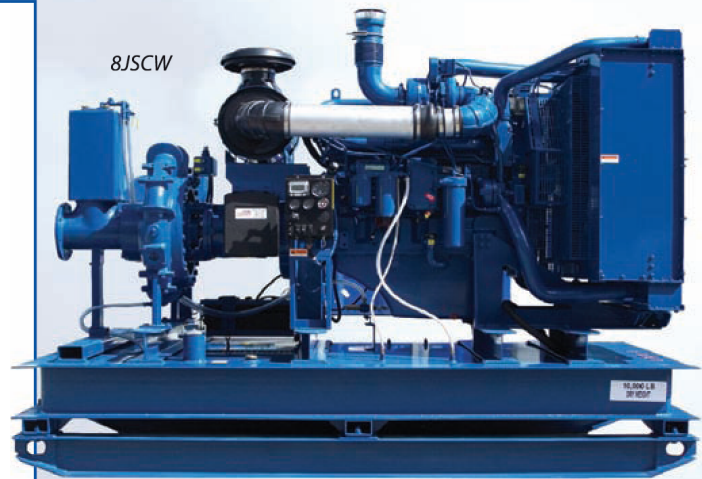
An automatic priming centrifugal trash pump series capable of handling abrasives and solids up to 4 inches. Exclusive Enviroprime System® prevents spills.



Model Specifications

Unit Model	Size (In.)	Maximum* Capacity (GPM)	Maximum* Head (Ft.)	Maximum* PSI	Maximum* Solids (In.)
3JSCB	3	800	330	143	1.00
4JSCM	4	1,450	175	56	3.00
4JSCC	4	1,450	230	99	3.00
4JSCD	4	1,310	330	143	3.00
6JSCD	6	1,410	440	186	3.00
6JSCJ	6	2,600	195	84	3.00
8JSCJ	8	3,200	300	130	3.00
8JSCW-JD	8	4,000	430	186	2.00
8JSCW-CT	8	4,250	660	255	2.00
10JSCG	10	4,500	220	95	3.38
12JSCG	12	5,300	405	152	3.38
12JSCJ	12	7,800	102	47	3.00
18JSCJ	18	9,000	240	87	3.00
18JSCK	18	11,000	160	69	4.00

*Consult engineering data for exact maximum performance RPM



ENVIROPRIME
system®

Mining Applications

- Wash-down operations
- Tailings
- High head/High volume operations

Features and Benefits

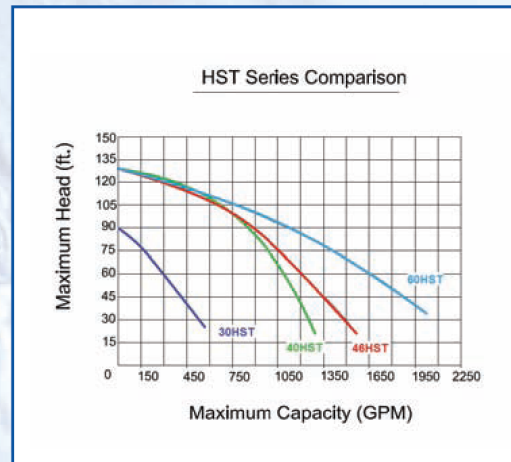
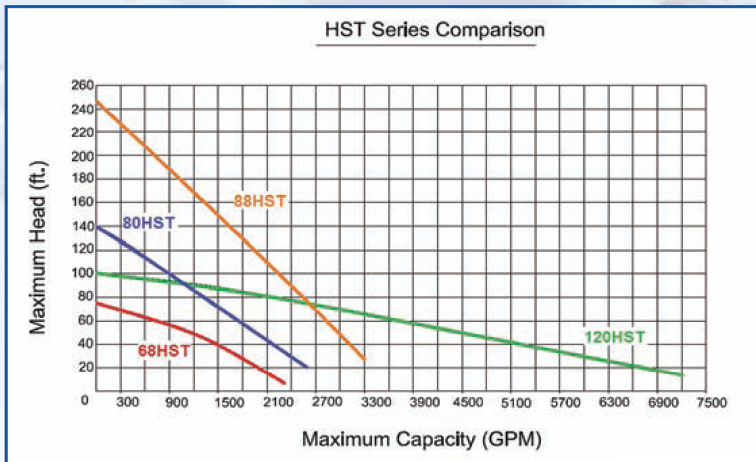
- Exclusive Enviroprime System® Compressor-Assisted priming system
- Automatic dry priming and re-priming
- Heavy-duty cast iron construction for long life
- High-pressure jetting capability
- Large solids handling capability - up to 4 inches

Optional Items

- Hardened wear parts
- Stainless steel materials of construction or hardened cast iron with zinc anode protection
- Some units able to pump bentonite
- Silent Knight® sound-attenuated canopy

Hydraulic Submersible (HPU, HST)

Designed to run dry without damaging components, this hydraulic pump set is constructed from heavy-duty cast iron and steel for durability, reliability and maximum versatility. The pumps are ideal for pit and quarry dewatering and any other applications that require the transfer of liquids that contain solids. Hydraulic Submersible pumps are designed to eliminate suction lift limitations that occur when pumping out of deep excavations that exceed 25 feet in depth.

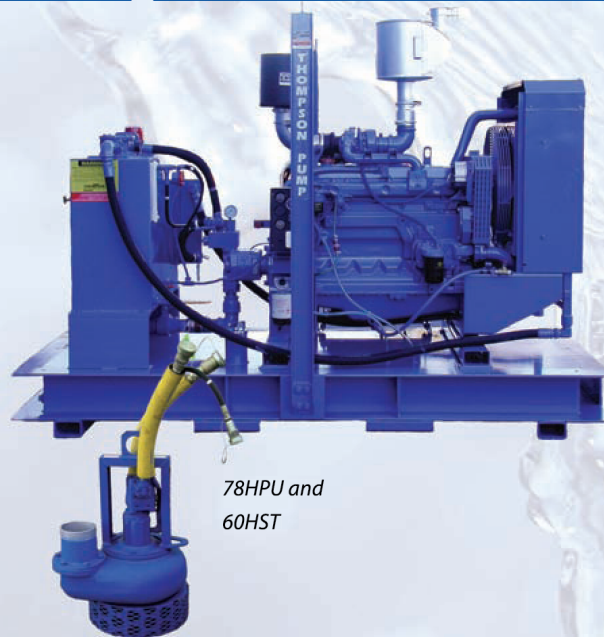


Model Specifications

Unit Model	Size (In.)	Maximum* Capacity (GPM)	Maximum* Head (Ft.)	Maximum Solids (In.)
30HST	3	590	90	1.75
40HST	4	1,300	130	3.00
46HST	6	1,550	130	3.00
60HST	6	2,000	130	3.00
68HST	8	2,300	75	3.00
80HST	8	2,600	140	3.00
88HST	8	3,300	240	3.00
120HST	12	7,200	100	4.25
Model	Max. Pressure** (PSI)	Flow** (GPM)	Reservoir (GPM)	
10HPU	2,800	14	30	
32HPU	2,800	36	60	
78HPU	2,300	82	50	

* Consult engineering data for exact maximum performance RPM

** Hydraulic Power Units are paired with Submersible Pump Ends to achieve a desired performance, unless otherwise requested. Consult engineering data or contact your representative for more information



78HPU and 60HST

Mining Applications

- Open pit and trench dewatering
- Wash-down operations
- Tailings
- High head/High volume operations

Features and Benefits

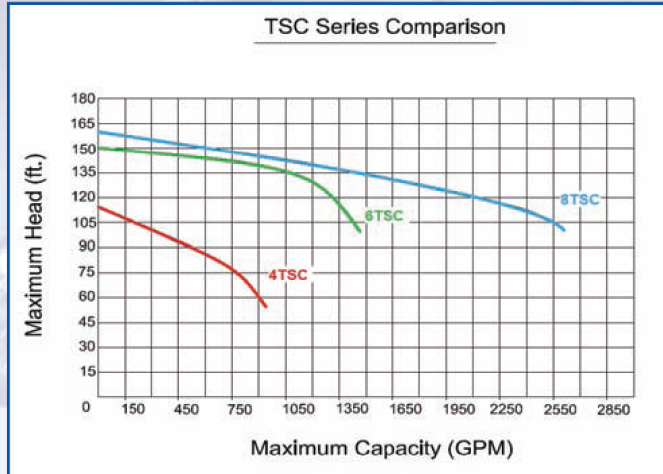
- Ability to place pump end in the pumping source
- Eliminates suction lift limitations
- Handles up to 4.25 inch solids
- Variable speed and flow
- Pumps efficiently at heads up to 240 feet
- Economical to operate
- Low oil level / high oil temperature shut-down system

Optional Items

- Hardened wear parts
- Stainless steel materials of construction or hardened cast iron with zinc anode protection
- Some units able to pump bentonite
- Optional biodegradable lubricants for environmentally sensitive areas
- Available with auto start and variable speed controls

Compressor-Assisted Enviroprime System® Trash (TSC)

Thompson Pump's TSC pumps are a multi-purpose Enviroprime System® automatic priming trash/sewage pump series that provide flows up to 2,600 GPM and heads up to 160 feet.



Model Specifications

Unit Model	Size (In.)	Maximum* Capacity (GPM)	Maximum* Head (Ft.)	Maximum* Solids (In.)
4TSC	4	930	112	3.00
6TSC	6	1,460	150	3.00
8TSC	8	2,600	160	3.35

* @ 2,200 RPM except 4TSC @ 2,000 RPM

Mining Applications

- Wash-down operations
- Tailings
- High head/High volume operations

Features and Benefits

- Exclusive Enviroprime System® Compressor-Assisted priming system
- Automatic dry priming and re-priming to 28 feet
- Heavy-duty cast iron construction for long life
- Large solids handling capability and clean out

Optional Items

- Hardened wear parts
- Abrasion resistant and corrosion resistant wetted parts
- Silent Knight® Enclosures provide a lockable enclosure to encase and cover the unit while also providing noise reduction
- Auto Start/Stop




THOMPSON PUMP
 EXPERIENCE INNOVATION